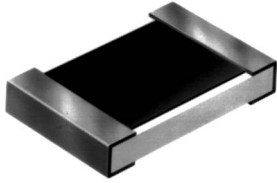


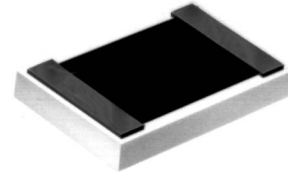


State of the Art, Inc.

High Value Chip Resistors



STYLE CHX
Pretinned Ni Barrier
Terminations



STYLE AH
Gold Terminations

SIZES and RATINGS

SIZE CODE	L x W (inches)	*MAXIMUM VOLTAGE	MAXIMUM RESISTANCE
S0502	.050 x .025	40 V	10 G Ω
S0504	.050 x .040	40 V	10 G Ω
S0705	.075 x .050	50 V	20 G Ω
S1005	.100 x .050	75 V	30 G Ω
S1206	.125 x .063	100 V	30 G Ω
S1505	.150 x .050	125 V	50 G Ω
S2010	.200 x .100	150 V	100 G Ω
S2512	.250 x .125	200 V	100 G Ω

*100 M Ω to 1 G Ω

TOLERANCES

VALUE RANGE	TOLERANCE
100 M Ω to 999 M Ω	5, 10, 20, 30, 50 %
1 G Ω to 9.9 G Ω	10, 20, 30, 50 %
10 G Ω to 100 G Ω	20, 30, 50 %

PART NUMBERING*

S1206 CHX 128 M

TOLERANCES

J: 5% K: 10% M: 20% N: 30% S: 50%

RESISTANCE VALUE

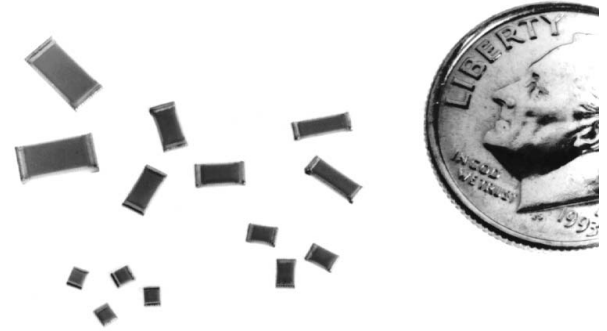
Three or four digits are used with all leading digits significant. The last digit specifies the number of zeros to add. Resistance is measured at 25°C, 5 VDC. Measurement at other voltages is available upon request.

TERMINATION STYLE

CHX (Solderable); AH (Wire Bondable);

SIZE CODE

See size codes listed in the table above.



* The part number shown specifies a .125" x .063", solderable, 1.2 Gigohm, \pm 20% tolerance chip resistor.

PACKAGING

Individual lot quantities are bulk packed in anti-static resealable bags.

Packaging options: Waffle Pack, Tape & Reel

OPTIONS

SOTA offers a full line of thick and thin film resistive products including: Surface mount, wire bondable, silicon, and Mil-PRF-55342 chip resistors qualified to S-level failure rate. Surface mount resistor networks, Mil-PRF-914 resistor networks, and custom thick and thin film circuits.

STATE OF THE ART, INC. 2470 Fox Hill Road, State College, PA 16803-1797
Phone (814) 355-8004 Fax (814) 355-2714 Toll Free 1-800-458-3401

Where Quality Isn't a Goal...It's Our Tradition